



Leddura 2Meet series

Effective collaboration. With any device. No matter where you are.

The new CTOUCH Leddura 2Meet is the ideal meeting collaboration system for lean and agile teams. Or for teams that focus on efficiency as a top priority.

- ✓ Easy to use because of simple and intuitive User Interface
- ✓ Efficient use of meeting time & resources resulting in short lead times
- ✓ Quick access to relevant data by connecting devices wirelessly
- ✓ Quick decision making, progress monitoring and continuous improvement
- ✓ Reduce waste such as connecting to cables or separate devices

Product number

- 32 Point touch: 10051965

Touch system

- Touch system: Surface Light Wave
- Touch points: 32 points
- Touch tool: Hand or other solid (soft tip) object
- Accuracy: ± 3 mm
- Read speed: 150 responses per second
- Effective screen size (mm): 1.428,48 (W) x 803,52 (H)
- Interface: USB 1.1 compatible (full speed) HID compliant, Plug & Play compatible, USB 2.0
- Supported OS: Windows, Mac and Android
- Touch driver: Not required for 20 points (under Windows and Android); 32 points need driver (under Windows)

Panel

- Diagonal size: 65"
- Panel resolution: 3840 x 2160
- Recommended resolution: 3840 x 2160
- Brightness (Nits): 350 cd/m²
- Contrast ratio: 4000 : 1
- Aspect ratio: 16 : 9
- Display colour: 1.07 Billion colours (10-bit)
- Pixel pitch (mm): 0.496 (W) x 0.372 (H)
- Back light unit: Direct LED
- Anti reflective glass: Yes

Connectivity

- Video input (digital): HDMI x 2, USB 2.0 x 2, USB FW, DP x 1
- Video input (analogue): VGA IN x 3, AV IN (mini jack) x 1
- Video output: HDMI x 1, VGA OUT x 1
- Audio input: x 3
- Audio output: HDMI out x 1, (SPDIF) x 1
- USB (for touch): x 1
- Network controllable input: RS232C, LAN IN
- Internal Wireless AC Router: 802.11 a/b/g/n AC

Sound - Designed, tuned and built by HARMAN

- Transducers: 2 Stereo JBL 3-Way Speakers (tweeter, mid-range and woofer)
- Amplifier power: 80 watts
- frequency range: 60Hz - 20kHz
- JBL Far Field microphone and noise reduction and echo canceling
- JBL LiveStage surround sound

Features / Convenience

FUNCTION

- Touch OSD: Via home button: Yes
- Languages: English
- Internal OPS module slot: Yes
- HDCP compliance: 2.2

VIDEO

- PSM: Warm / Cool / Normal
- Picture mode: Dynamic / Standard / Soft / User / Game / Writing
- Energy Mode: Normal / Balanced / Eco friendly / auto adjust
- Freeze function: Yes
- Backlight mute function: Yes
- Ambient light sensor (auto adjust backlight): Yes

Meeting application

- Whiteboard / wireless sharing / video conferencing
- Embedded meeting software solution
- Powerful and secure Meeting Client based on Skype for business.
- Runs on dedicated build-in Intel i5
- 3 years of upgrade

Dimensions and Quality approvals

- Dimensions (mm): 1513.6 (W) x 901.6 (H) x 116 (D)
- Product weight: 52 kg
- VESA mount (mm): 400 (W) x 400 (H)
- Green approvals: RoHS compliant
- Regulatory approvals: CE
- ISO standard: ISO9001 and ISO14001
- Thickness of safety glass: 4 mm

Power consumption

- Power consumption nominal: 123 W
- Power consumption sleep mode: 0.5 W

Warranty

- Service & warranty: 3 years warranty

Product accessories- Included

- Accessories pack: Power cable, USB cable, HDMI cable, remote, touch pen, Quick start guide, USB docking station for visitor USB token incl. USB sticks.

Extras

SUPPORT & TRAINING

- Support and training programs: On request

MOUNTING

- CTOUCH Wallom2 wall lift - electric: 10080250
- CTOUCH Wallom2 mobile lift - electric: 10080251

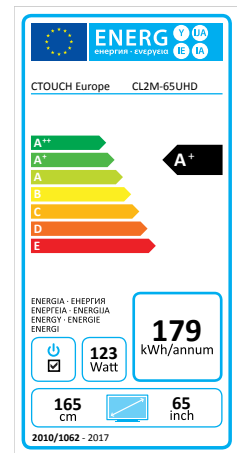
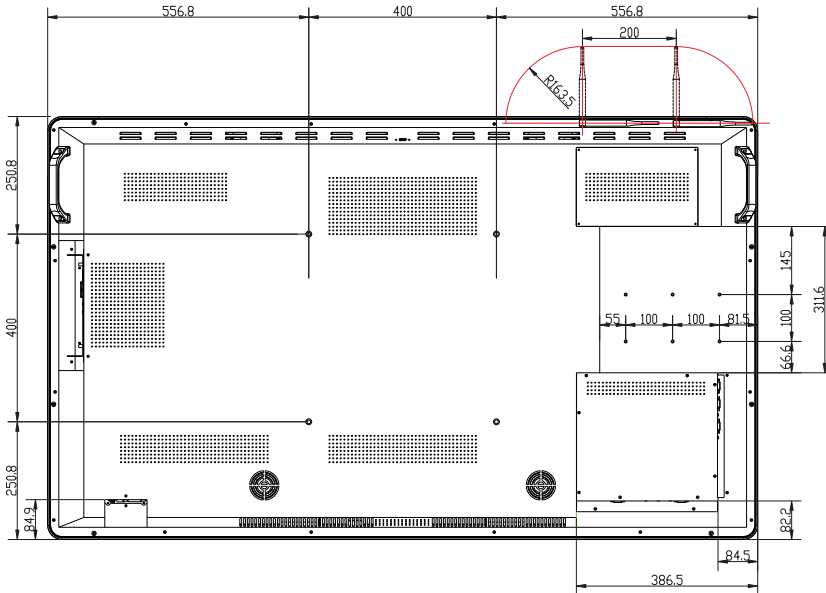
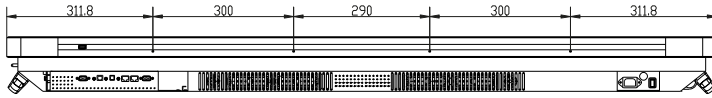
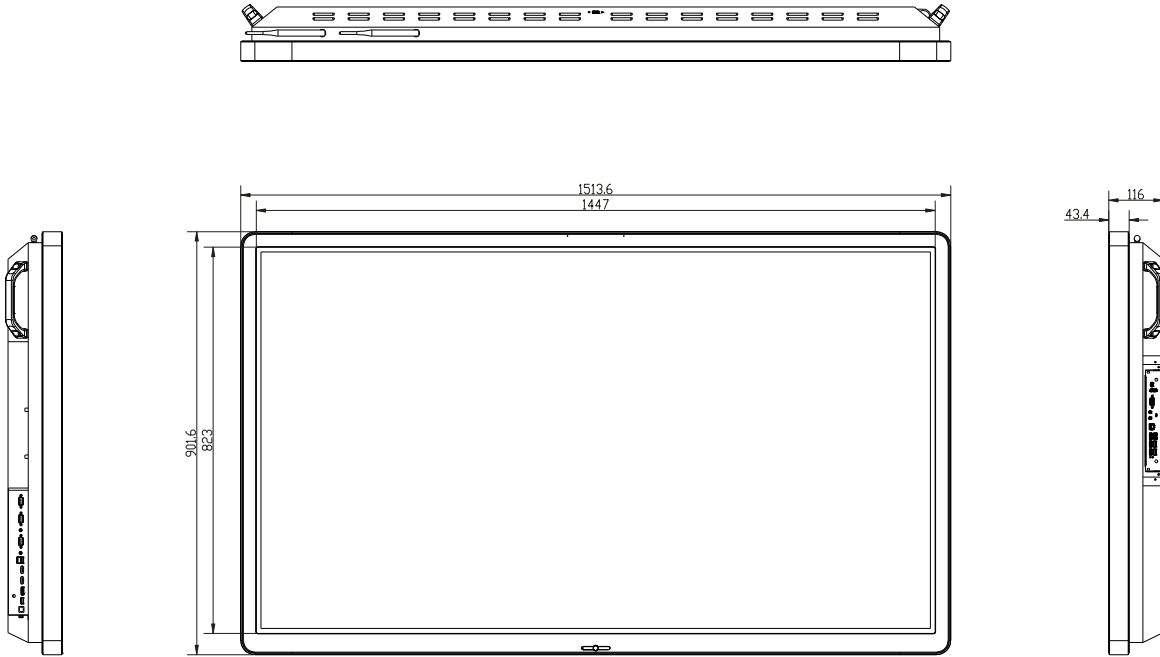
CAMERA

- Cam 340, 4K wide angle: 10051979

Logistics information

- Box size (mm): 1637 (W) x 1087 (H) x 234 (D)
- Gross weight: 61 kg
- EAN no.: 8719481480134





All rights reserved. CTOUCH products and services mentioned herein as well as their respective logos are trademarks or registered trademarks of CTOUCH Europe B.V.. All other product and service names mentioned are the trademarks of their respective owners.

